



هيئة تقويم التعليم والتدريب
Education & Training Evaluation Commission



Preparation Form (A)

National Tests (NAFS)

6th Grade

2026



Section One: Mathematics

Items: 1 - 10

Time: 18 Min.

INSTRUCTIONS

- Read each question carefully, then choose the correct answer.
- Each question has only **one** correct answer.
- Answer all the questions.

1 At the strawberry farm, Hind picked $1\frac{3}{4}$ kilograms of strawberries, and Ghada picked $2\frac{1}{2}$ kilograms. They decided to share the total amount equally. How many kilograms will each of them get after sharing?

A. $2\frac{1}{8}$

B. $2\frac{1}{4}$

C. $2\frac{3}{8}$

D. $2\frac{3}{4}$

2 A total of eight hundred people participated in a long race. 25% finished in less than two hours, 40% finished between two and three hours, and 20% finished between three and four hours. How many people finished in more than four hours?

A. 100

B. 120

C. 150

D. 200

3 Hisham makes a monthly payment to the bank (p). If his salary is three times the value of his payment, which of the following algebraic expressions represents the amount left from his salary over one year?

A. $24p$

B. $12p$

C. $8p$

D. $2p$

4 Determine the approximate total volume, in cubic centimeters, of a structure formed by thirty blocks. Each block is a rectangular prism with edge lengths $l=50$ cm, $w=40$ cm and $h=30$ cm.

A. 30000

B. 60000

C. 1800000

D. 2700000

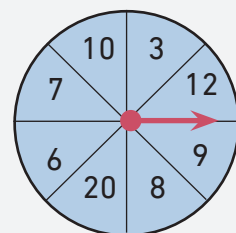
5 If the spinner below is spun once, what is the probability that it will stop on an even number?

A. More likely

B. Equally likely

C. Less likely

D. Impossible



Section Two: Sciences

Items: 11 - 20

Time: 18 Min.

INSTRUCTIONS

- Read each question carefully, then choose the correct answer.
- Each question has only **one** correct answer.
- Answer all the questions.





11 Which of the following statements correctly describes the behavior/(behaviour) of the speed of light?

- A. It changes continuously and cannot be measured
- B. It remains constant in all transparent media
- C. It is greater in a vacuum than in material media
- D. It is greater in material media than in a vacuum

12 Many caves on Earth form naturally. Which of the following causes is the main reason for their formation?

- A. movement of Earth's crust
- B. accumulation of sand by wind over time
- C. dissolving of rocks by acidic groundwater
- D. release of accumulated energy beneath Earth's surface

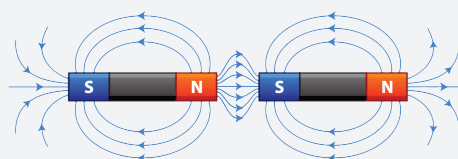
13 Which of the following students in the table below gave correct examples for classifying living organisms?

- A. Mohammed
- B. Ali
- C. Saleh
- D. Nasser

Student	Unicellular Organisms	Multicellular Organisms
Mohammed	Bacteria – Juniper plant – Butterfly	Crocodile – Elephant – Viruses
Ali	Bacteria – Yeast fungus – Paramecium	Camel – Apple tree – Eagle
Saleh	Escherichia coli – Fungus – Potato plant	Pea plant – Bacteria – Rabbit
Nasser	Dolphin – Viruses – Bee	Tiger – Olive tree – Lizard

14 What causes attraction or repulsion between magnetic poles without direct contact, as shown in the figure below?

- A. presence of a magnetic field
- B. difference in the amount of matter
- C. presence of electric charges
- D. difference in the particles of matter



15 What is the recessive trait in the genetic trait table of the pea plant shown in the figure?

- A. Smooth seeds
- B. Purple flowers
- C. Green pods
- D. Short stem

Adjective	symbol	Figure
Smooth seeds	AA	
Purple flowers	Aa	
Green pods	AA	
Short stem	aa	




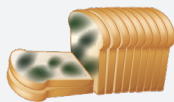
16 Ahmed was playing football with his friends and was hit in the chest, but his internal organs were not seriously harmed. Which body system is responsible for protecting them?

- A. Skeletal system
B. Muscular system
C. Nervous system
D. Circulatory system
-

17 Which of the following methods is the best way to conserve soil in areas with strong winds?

- A. Strip cropping
B. Use agricultural terraces
C. Contour plowing
D. Use vegetative barriers
-

18 Which of the following pictures shows a physical change?

- A.  B. 
- C.  D. 
-

19 A farmer uses an axe to cut down trees. What type of simple machine is the axe?

- A. Screw
B. Wedge
C. Inclined plane
D. Wheel and axle
-

20 On the evening of the 30th day of the lunar month, Sulaiman searched for the moon in a clear sky, but he could not see it. This is because the moon was in the phase of:

- A. Waning crescent
B. Last quarter
C. New moon
D. Full moon



Section Three: Reading

Items: 21 - 25

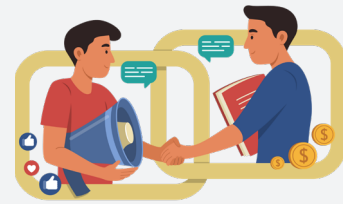
Time: 18 Min.

INSTRUCTIONS

- Read the whole passage before you answer the questions.
- Read each question carefully, then choose the correct answer.
- Each question has only **one** correct answer.
- Answer all the questions.

Healthy communication is a cornerstone of personal development and a critical skill for managing relationships at school, at home, and in the community. It is more than simple conversation; it includes active listening, respecting others' opinions, and expressing ideas clearly. This process involves both verbal and nonverbal communication, such as body language, facial expressions, and tone of voice, which often convey meaning more powerfully than words.

In a classroom, students who communicate well achieve better in groups because they can share ideas freely and solve problems together. For example, when two classmates disagree on a project, they can explain their opinions calmly and find a fair solution that works for everyone. Outside school,



healthy communication is equally important, it helps families understand one another better and avoid conflicts. Parents and children who make a habit of talking openly and listening attentively often develop stronger, more trusting bonds over time.

Teachers sometimes use activities like role-play to help students practice these real-life situations in a safe environment. These exercises teach important skills like **empathy**, which is the ability to understand and share another person's feelings, and teamwork, which builds trust and cooperation. By practicing these skills, students learn that authentic communication is not just about speaking; it is about **genuinely** connecting with others, listening as much as speaking, and always showing respect for different perspectives.

21 What is the opposite of the word “**genuinely**” as used in the text?

- | | |
|--------------|-------------|
| A. sincerely | B. truly |
| C. falsely | D. honestly |

22 Based on the text, the word “**empathy**” means the ability to...

- A. compete successfully with other people.
- B. sense and relate to another person's feelings.
- C. express ideas clearly and confidently in speech.
- D. give instructions and guide other people effectively.



23 What is the main idea of the text?

- A. Active listening helps people solve problems.
 - B. Role-play activities teach students teamwork.
 - C. Families benefit when they listen attentively.
 - D. Healthy communication builds better understanding.
-

24 What is one difference between verbal and nonverbal communication mentioned in the text?

- A. Verbal communication is less important than nonverbal communication.
 - B. Nonverbal communication happens exclusively in classroom settings.
 - C. Verbal communication uses gestures, while nonverbal communication uses written words.
 - D. Nonverbal communication uses gestures and tone, while verbal communication uses words.
-

25 What value can be deduced from the text?

- A. Clear expression is more effective than listening.
 - B. Clear expression is useful only in school projects.
 - C. Communication helps reduce misunderstandings.
 - D. Respectful communication strengthens cooperation.
-

End of test

Answer Key

#	Answer Key
1	A
2	B
3	A
4	C
5	A
6	A
7	B
8	C
9	C
10	B
11	C
12	C
13	B
14	A
15	D
16	A
17	D
18	C
19	B
20	C
21	C
22	B
23	D
24	D
25	D





هيئة تقويم التعليم والتدريب

Education & Training Evaluation Commission



ETECKSA



ETEC.GOV.SA