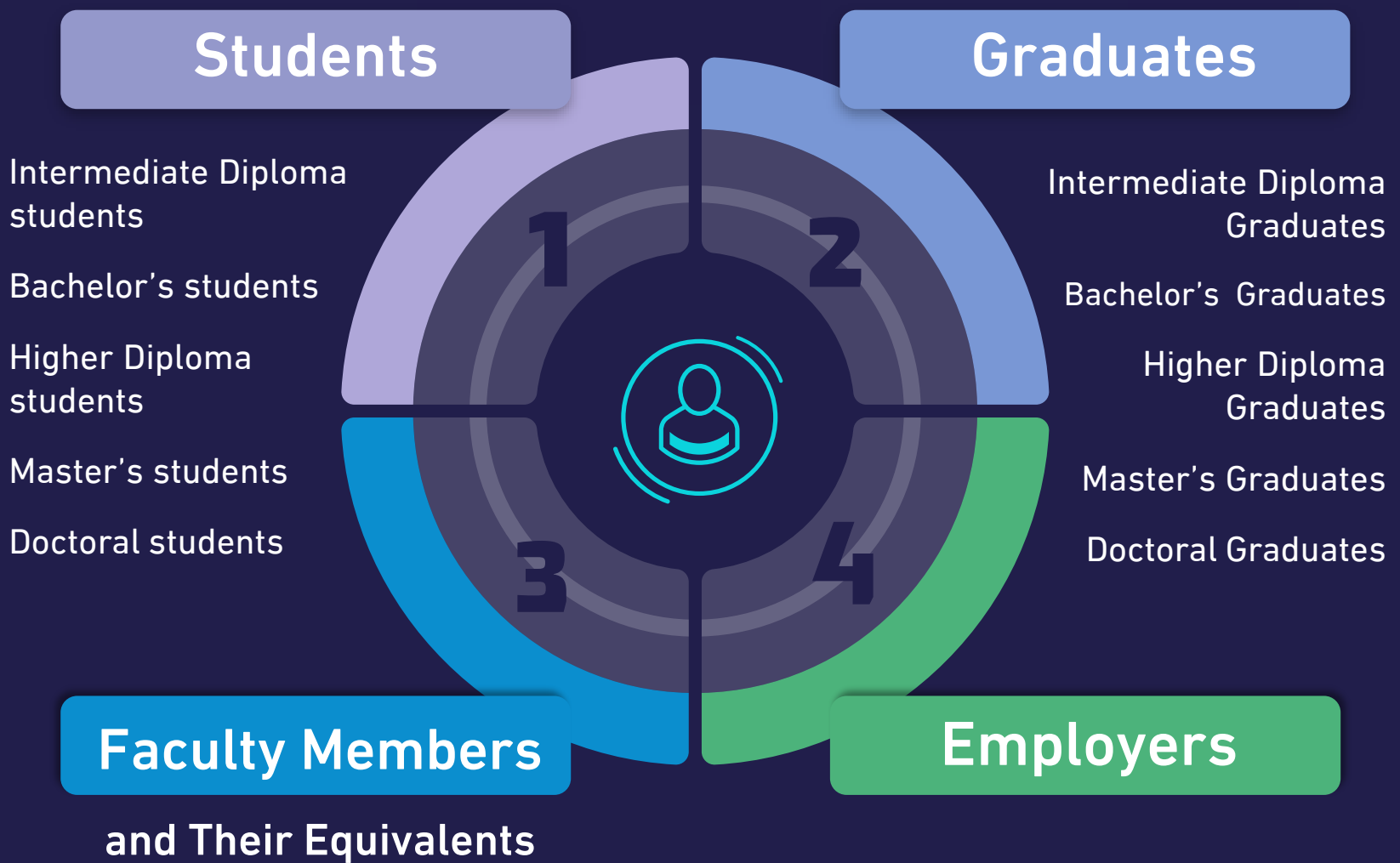




# Higher Education Quality Surveys



## Target Groups



The opinion surveys target four key strategic groups that form the pillars of the educational process:

- **Students:** To assess their academic experience and the university environment.
- **Graduates:** To measure their professional readiness and the relevance of their specializations.
- **Faculty Members and Their Equivalents :** To assess the quality of the educational process and institutional support.
- **Employers:** To assess the competency of graduates and the alignment of programs with labor market requirements, thereby ensuring reliable data collection to support comprehensive improvement.